

NEW IN AUTOVUE ENTERPRISE VISUALIZATION, RELEASE 20.1.0

KEY FEATURES AND BENEFITS

TOP NEW FEATURES AND ENHANCEMENTS

- Reinforced enterprise architecture
- Stability, reliability and performance improvements
- Extended integration framework to develop differentiated solutions
- Visual navigation & action with Hotspots
- ECAD visualization enhancements
- Updated AutoVue Document Print Service releases
- Text extraction APIs extended to Office documents
- Printing enhancements
- New Desktop Deployment Active X integration
- Support for Windows 7 (client) & Windows 2008 R2 (server)
- Support for Virtualization
- Integration for Oracle Enterprise Manager

KEY BENEFITS

- Extend reach of engineering, asset and product information to all enterprise users
- Enable end to end design to manufacturing process
- Serve personal productivity and enterprise visualization needs with single platform
- Enable partners to develop highly differentiated solutions
- Boost the value of existing enterprise systems
- Improve business processes and decision making with visual context
- Enable efficient digital collaboration

AutoVue 20.1.0 is the latest major release of the family of Enterprise Visualization solutions from Oracle. Significant R&D investment in 20.1.0 reinforces AutoVue's enterprise class architecture and delivers a visualization platform capable of addressing all document visualization needs within an organization, from personal productivity for desktop users to enterprise wide visualization and collaboration. AutoVue 20.1.0 also includes: a series of powerful integration enablement capabilities, which partners and systems integrators can leverage to develop differentiated solutions; significant industry specific enhancements for high tech and asset intensive customers; unparalleled new format support, as well as significant improvements for cost-effective AutoVue deployment and administration.

Best in Class Visualization Platform

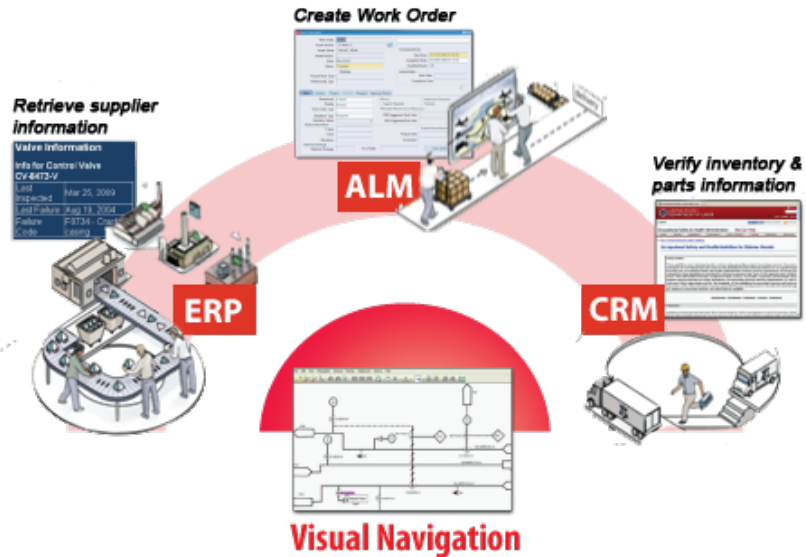
With adoption of visualization expanding from departmental to enterprise-wide use Oracle has invested considerably in R&D to deliver a unique, more robust enterprise-class architecture capable of serving all of an organization's document visualization needs with a single platform. AutoVue can be leveraged either as a personal productivity tool for desktop usage (Desktop Deployment), or as an enterprise wide visualization and collaboration solution capable of unlocking information to all enterprise users (Client / Server Deployment). With its open integration framework, the Client/Server method of deployment is the gateway to enterprise visualization and facilitates integration into existing IT infrastructures.

Visualization Platform to Develop Differentiated Solutions

To facilitate visualization at an enterprise level AutoVue 20.1.0 delivers a host of standards-based integration enablement capabilities. Partners and system integrators can leverage these to build rich AutoVue integrations that visually enable business processes by connecting data, visual information and business applications. These capabilities represent significant opportunities for partners to develop highly differentiated solutions to address specific business needs in a variety of industries and use cases.

Visual Navigation and Action with AutoVue Hotspots

AutoVue Hotspots deliver tighter integration with enterprise applications by connecting visual information to structured data. AutoVue's rich Hotspotting framework enables bi-directional, action-oriented linkage of the visual representation of assets or products to data in enterprise systems like Enterprise Resource Planning (ERP) or Asset Lifecycle Management (ALM). With AutoVue hotspots, textual elements in a document or drawing are turned into hotspot links that can trigger actions or launch pages within other applications.



"We are developing an integration into both the Content Server and the eDOCS DM platforms from Open Text, leveraging AutoVue's new Hotspot capability which will allow our customers in the Oil & Gas space to view and easily navigate their P&ID (piping and instrumentation diagrams) drawings. We are also automating the tagging of documents for easier search retrieval, which will enable customers to better navigate a collection of documents and improve productivity."

*Chris Clark, Sales Director,
Cad-Capture UK*

Figure 1. Enable visual navigation and action with AutoVue Hotspots

For example, in an asset maintenance scenario, service technicians can retrieve asset information from the ALM system directly from the plant floor plan or Process and Instrumentation Diagram (P&ID). From within the drawing the technician can initiate an action, such as create a work order, or access other related asset documentation, ultimately saving time, improving productivity and reducing errors. This round trip visual navigation allows for improved operational and process efficiency in downstream use cases by making information accessible from multiple environments and providing rich information context.

Enhanced 20.1 AutoVue Document Print Services

Partners can leverage AutoVue DPS to develop specialized solutions which can augment the efficiency of their customer's printing and business processes. For example, an Asset Lifecycle Management system can be enhanced to automate the printing of work orders and all corresponding attachments for use during the execution of maintenance and repair jobs. The new 20.1.0 releases of DPS are now available on Linux, as well as the Windows platform, and include improved documentation, such as performance tuning & high availability guides, deployment recommendations and sample code, which serves as a development starting point.

Text Extraction APIs Extended to Office Formats

As part of its Service Oriented Architecture (SOA) strategy, AutoVue delivers a series of Web Services which ensure a complete, open-standards, and flexible approach for deploying AutoVue capabilities throughout an organization. In 20.1.0, AutoVue's Text Extraction Web Service APIs have been extended to include support for Office document types. These extended APIs enable IT managers to leverage AutoVue as a single source for all text extraction requirements. They can use one solution to extract and index text from any file type, including Office, 2D and 3D CAD, and build an optimized search index within applications, such as content management or product lifecycle management solutions. End users can find complete and accurate information quickly, enabling them to make better decisions.

New Desktop Deployment ActiveX Integration

As part of the 20.1.0 major release cycle, a new Desktop Deployment ActiveX Integration is available. This brand new ActiveX integration serves to replace the previous AutoVue Desktop Version ActiveX offering and delivers improved stability and reliability with a modern code base. It provides access to new AutoVue 20.x functionality, such as 3D walkthrough, and enables Windows-centric development organizations to embed the AutoVue user interface (UI) into other Windows applications to enable visualization capabilities within other solutions.

Simplify AutoVue Deployment and IT Administration

IT managers will benefit from the many improvements for monitoring and troubleshooting available in Release 20.1.0. Improvements include: integration for Oracle Enterprise Manager; easier to understand and track logs; automatic packaging of logs for troubleshooting purposes; and enterprise usage tracking with availability and user count. Also new is an automatic upgrade from AutoVue 20.0.0 to 20.1.0, which saves time for IT managers and ensures error free upgrades.

Release 20.1.0 also includes official support for VMWare server, allowing AutoVue to fit well into a modern IT infrastructure where virtualization is used. IT managers can maintain fewer physical servers and enable faster server deployment.

IT Managers will appreciate the suite of documentation that ships with 20.1.0 which helps to facilitate enterprise deployments. Examples include a new Viewing Configuration Guide which describes how to optimize viewing of specific formats, an API Overview Guide which delivers a high level view of how to use key APIs, and a Planning Guide which provides advice on architecture and capacity planning.

Visualization Enhancements for Industry Customers

This latest release delivers capabilities to meet the needs of industry customers.

Improvements for Electronics and High Tech Customers

Customers in the Electronics and High Tech space can take advantage the many new features which improve design and manufacturability reviews and enable an end to end design to manufacturing process. Productivity enhancing capabilities include:

- Ability to measure minimum distance between entities across layers
- Improved support for Bills of Material (BOM) with the ability to select Board Side attributes
- Support for Enhanced Display Modes (EDM)
- Ability to modify global transparency for EDA files
- Modify layer polarity for Gerber files

These new capabilities allow manufacturing engineers to perform accurate manufacturability reviews through better support for variants, overlays and polarity and improve collaboration on Work in Progress designs.

Printing Improvements Support Paper-based Processes

Customers in asset-intensive industries that need to print a variety of engineering, plant and maintenance documents during the course of maintenance operations can

"We are leveraging the new AutoVue DPS release to build an integration with Oracle EBS Enterprise Asset Management to enable more robust printing capabilities within eAM for Oracle EBS customers. This capability enables maintenance planners to easily create and print work order packets, including any related attachments, improving the productivity of maintenance personnel and eliminating risks associated with manually assembling work order packets."

*Marc Hebert, Chief
Operating Officer, Estuate*

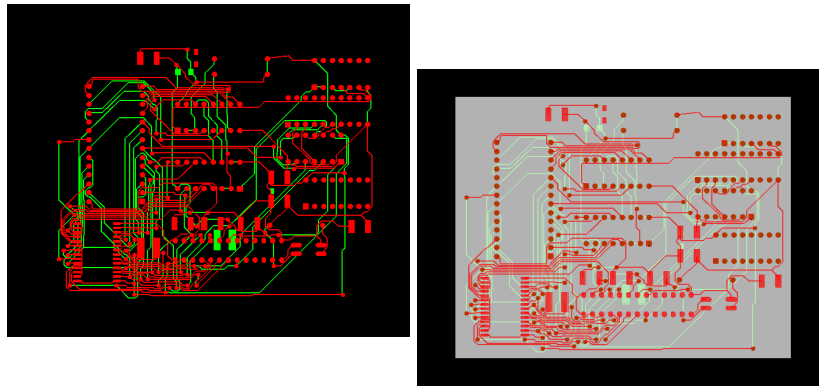


Figure 2. Change polarity in EDA files to view designs as they are being manufactured

"With AutoVue's new EDA overlay capability and improved support for the Gerber file format, our manufacturing engineers can overlay a native design in Cadence with a Gerber file to ensure that manufacturing personnel have what they need to quickly assemble and verify printed circuit boards (PCB). Any issues identified during this process can be conveyed back to the design engineering team directly on the overlay via AutoVue's digital annotations, improving our manufacturability review process."

*Charlie Davies, ECAE
Application Engineer, Harris
Corporation*

take advantage of new printing enhancements which include:

- Excel printing improvements - support for print settings taken from Excel files
- printing of markup notes
- optimized spool size for documents with transparent logos and images
- ability to skip blank pages & print in grayscale

These enhancements improve the efficiency of printing operations and paper-based processes, and complete AutoVue's collaboration story with markup note printing.

Extended World Class Format Support & PDF Improvements:

AutoVue 20.1.0 delivers world class support for new formats and includes fidelity improvements for several format types. Additionally, a number of architectural improvements have been made to how AutoVue processes PDF files which reduce network traffic and optimize network performance. Now with PDF files, operations such as zooming, which occur after the initial file load, are performed locally. This reduces server load and network traffic, improves performance and enables faster navigation of PDF files.

New formats in release 20.1.0 include:

- **MCAD:** – Inventor 2011, SolidWorks 2011, AutoCAD Mechanical 2011, JT 9.1, CATIA V5 R20, SolidDesigner/CoCreate Modeling 16.00C/D/E, 16.50A/B and 17.0, IGES 3D
- **2D CAD** – AutoCAD 2011, CoCreate Drafting 16.00A/B/C/D/E, 16.50A/B and 17.0
- **ECAD** – Zuken CADSTAR 12.0, OrCad Capture 16.3, Mentor Board Station & Design Architect 8.11, 8.12, 8.13

Contact Us

For more information about Oracle's AutoVue enterprise visualization solutions, call +1.800.363.5805 or +1.514.905.8400 to speak to an AutoVue representative, email us at autovuesales_ww@oracle.com or visit <http://ww.oracle.com/autovue>

Copyright © 2011, Oracle and/or its affiliates. All rights reserved. This document is provided for information purposes only, and the contents hereof are subject to change without notice. This document is not warranted to be error-free, nor is it subject to any other warranties or conditions, whether expressed orally or implied in law, including implied warranties and conditions of merchantability or fitness for a particular purpose. We specifically disclaim any liability with respect to this document, and no contractual obligations are formed either directly or indirectly by this document. This document may not be reproduced or transmitted in any form or by any means, electronic or mechanical, for any purpose, without our prior written permission. Oracle is a registered trademark of Oracle Corporation and/or its affiliates. Other names may be trademarks of their respective owners.